

© Norlinvest Ltd, BVI. Visionics is a trade name of Norlinvest Ltd. All Rights Reserved.

No part of the Installing EDWinXP document can be reproduced in any form or by any means without the prior written permission of Visionics. Installing EDWinXP document is subjected to change without notice. Visionics will make changes in a manner that will not affect dependent systems.

Unauthorized duplication, in whole or part, of this document by any means, mechanical or electronic, including translation into another language, except for brief excerpts in published reviews, is prohibited without the express written permission of Visionics.

Visionics, EDWinXP, Docone, EDComX, SimWinXP and Mixed Mode Simulator and their respective logos are trademarks or registered trademarks of Visionics. Unauthorized duplication of this work may also be prohibited by local statute.

**Disclaimer:** Information in this publication is subject to change without notice and does not represent a commitment on the part of Visionics. The information contained herein is the proprietary and confidential information of Visionics or its licensors, and is supplied subject to, and may be used only by Visionics's customer in accordance with, a written agreement between Visionics and its customer. Except as may be explicitly set forth in such agreement, Visionics does not make, and expressly disclaims, any representations or warranties as to the completeness, accuracy or usefulness of the information contained in this document. Visionics does not warrant that use of such information will not infringe any third party rights, nor does Visionics assume any liability for damages or costs of any kind that may result from use of such information.

---

## CONTENTS

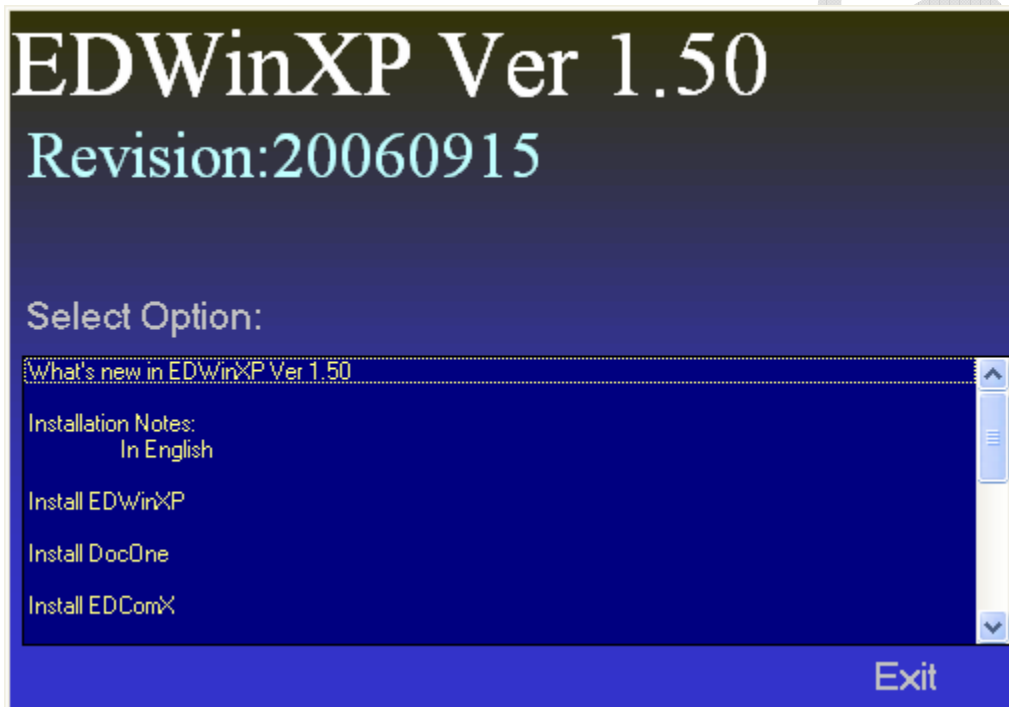
<b>CONTENTS .....</b>	<b>2</b>
<b>INSTALLING EDWINXP.....</b>	<b>3</b>
AUTO RUN .....	3
EDWINXP SETUP PROBLEM .....	4
SYMPTOMS .....	4
CAUSE .....	4
RESOLUTION .....	4
PROBLEMS THAT MAY OCCUR AFTER INSTALLATION.....	5
SYMPTOMS .....	5
CAUSE .....	5
RESOLUTION .....	5
<b>LICENCE DISKETTES .....</b>	<b>6</b>
FULL INSTALLATION .....	6
INSTALL EVALUATION VERSION .....	7
PRODUCT ACTIVATION.....	8
<b>ENTERPRISE LICENSING.....</b>	<b>10</b>
PLUG-IN INSTALLATION .....	11
<b>UNINSTALL EDWINXP .....</b>	<b>13</b>

---

## Installing EDWinXP

### Auto run

Insertion of the CD-ROM automatically displays a dialog enabling access to following functions:



1. What's new in EDWinXP
2. To present Installation Notes in various languages
3. Install EDWinXP.
4. Install Slide Show presentation
5. Answers to Frequently Asked Questions in Help format (Winhelp version)
6. To access EDWinXP CD ROM Manuals
7. To explore contents of the CD ROM

## **EDWinXP Setup Problem**

### **Symptoms**

When running EDWinXP setup program or the Autorun program from the CD-ROM, you receive the following error message:

The **SETUP.EXE** file is linked to missing export OLEAUT32.DLL:185. When you click OK, you receive the following error message: <Path>\Setup.exe,( where <Path> is the location of Setup.exe) A device attached to the system is not functioning.

### **Cause**

Setup packages built with the Package and Deployment Wizard will not run on the original version of Windows 95 due to lack of support for an API function in the file Oleaut32.dll, version 2.1. The failure does not occur on later versions of Windows 95, Windows98, or any versions of Windows NT 4.0 and later. Further, this failure does not occur if another program installation, such as installation programs for Microsoft Office 97, Internet Explorer 3.0, or Internet Explorer 4.0, has updated Oleaut32.dll to a newer version.

### **Resolution**

To resolve the problem, the latest Automation files must be installed onto the client machine before SETUP.EXE can run successfully. The latest Automation files may be installed by using VBRUN60.EXE. VBRUN60.EXE installs the Microsoft Visual Basic 6.0 run-time library (MSVBVM60.EXE) and updates required Automation files used by Visual Basic 6.0 applications (including OLEAUT32.DLL). After VBRUN60.EXE is run successfully, the SETUP.EXE program may be run to install EDWinXP Product.

**Problems that may occur after installation****Symptoms**

Unable to open the functional module 'Waveform Viewer' of EDWinXP in Windows 9x machines.

**Cause**

This may be due to older version of Dcom98.exe file residing in your system, which needs to be upgraded.

**Resolution**

To resolve the problem, select the directory TOOLS in EDWinXP Installation CD. Double click "Dcom98.exe" file residing in DCOM directory.

VISIONICS

---

## Licence Diskettes

With every copy of EDWinXP follows a set of one or more LICENCE DISK(s) - depending on purchased range of the package. Licence Disks contain necessary information to SETUP the program and to install required system components from CD-ROM on to user's computer.

During installation procedure, user will be asked to enter (select) the disk drive where Licence Disk is inserted.

By default, the SETUP program will suggest target subdirectory/ folder for installation to be C:\EDWinXP. User may change this assignment prior to installation, entering other path into text box of confirmation dialog displayed by SETUP program.

In most instances all purchased Licences will be stored in one Licence Disk. In such case the whole package will be installed in one go. The list of system components covered by purchased Licence will be displayed by SETUP Program.

It is also possible that the user will be supplied with Licence Disk for main part of the system and separate Licence Disk(s) covering such features like:

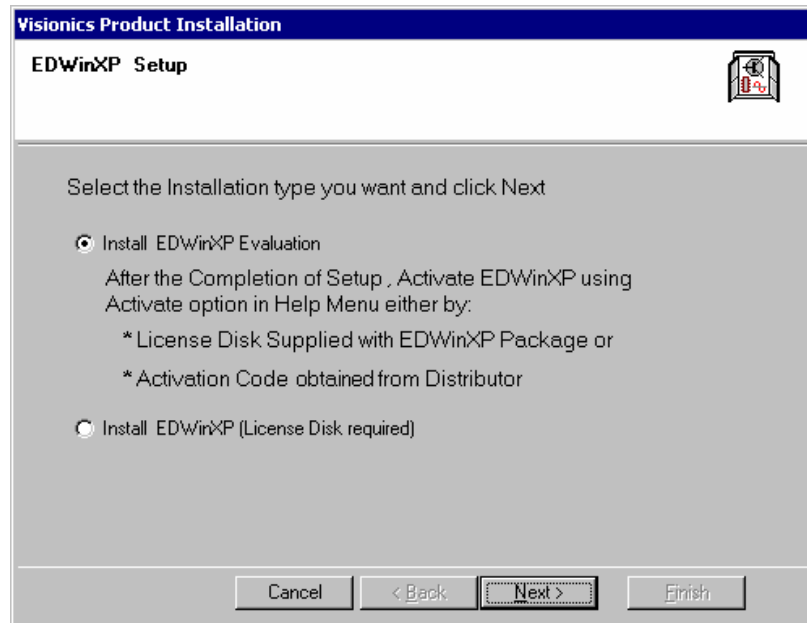
- Full set of EDWinXP Libraries
- EDSpice Simulator
- Thermal Analyzer
- Electromagnetic Analyzer & Signal Integrity Simulation

In such cases, each Licence must be installed separately starting with main system Licence Disk. The installation process is initiated by selecting Autorun option "**Install EDWinXP.**"

### Full Installation

For full installation, proceed as follows:

1. Click on **Install EDWinXP** on the Autorun Window to pop up **Product Installation** dialog.



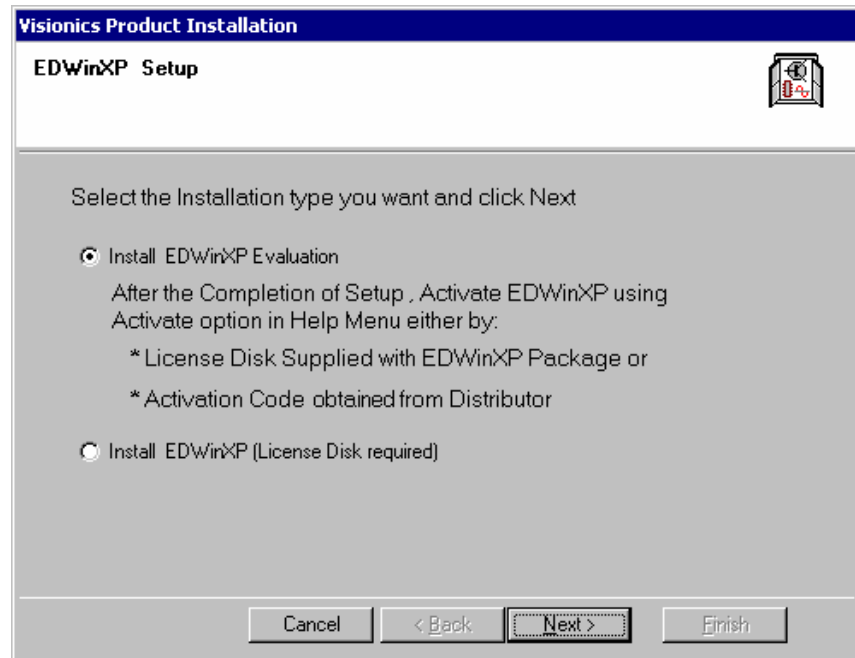
2. Select **Install EDWinXP**. This requires Licence Diskette supplied with CD-ROM.
3. Click on **Next** button.
4. Provide the **path of licence diskette** for full installation. Click on **Next** button.
5. Select the **destination** folder for EDWinXP.
6. Click **Finish** to complete the installation.

### Install Evaluation Version

It is possible to use evaluation version of EDWinXP and later activate EDWinXP. The evaluation period may also be extended.

To install evaluation version, proceed as follows:

1. Click on **Install EDWinXP** on the Autorun Window to pop up **Product Installation** dialog.



2. Select Install EDWinXP Evaluation.
3. Click on **Next** button.
4. Select the **destination** folder for EDWinXP
5. Click on **Next** button
6. Click **Finish** to complete the installation.

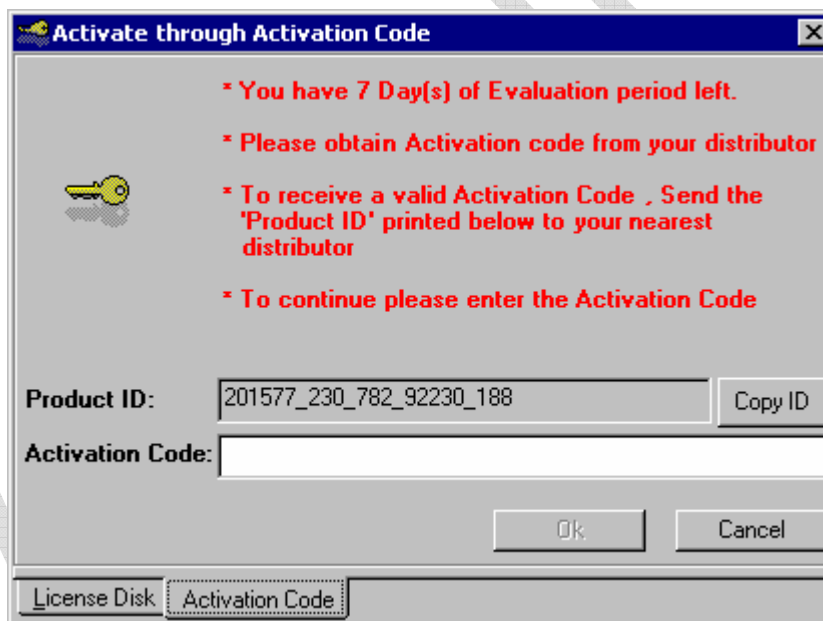
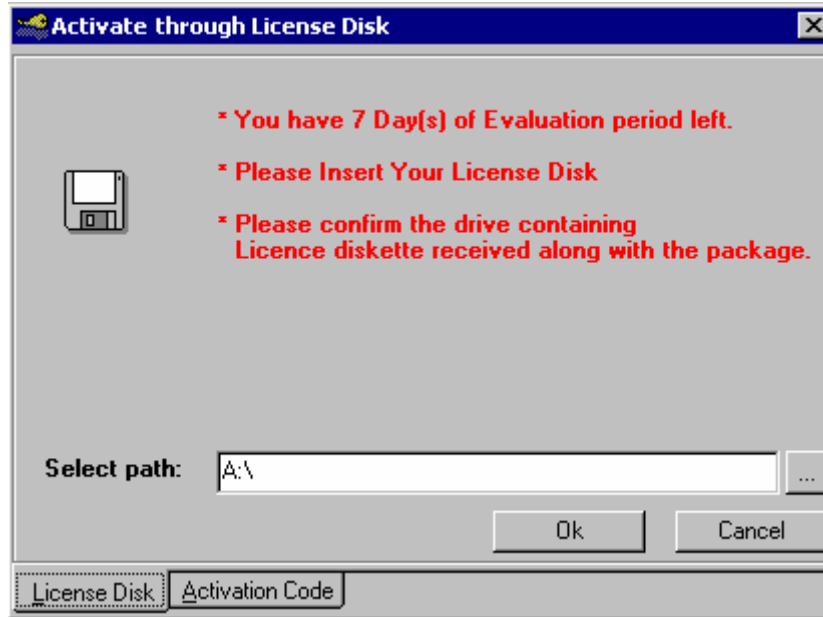
For details on activating the product or extending the evaluation period, refer [Product Activation](#).

*Note:* Plugins are not available with evaluation version.

### Product Activation

To activate EDWinXP from evaluation version, proceed as follows:

1. Click on the menu item Help / Activate EDWinXP present in EDWinXP Project Explorer.
2. Product may be activated either using **Licence Disk** or **Activation Code**.



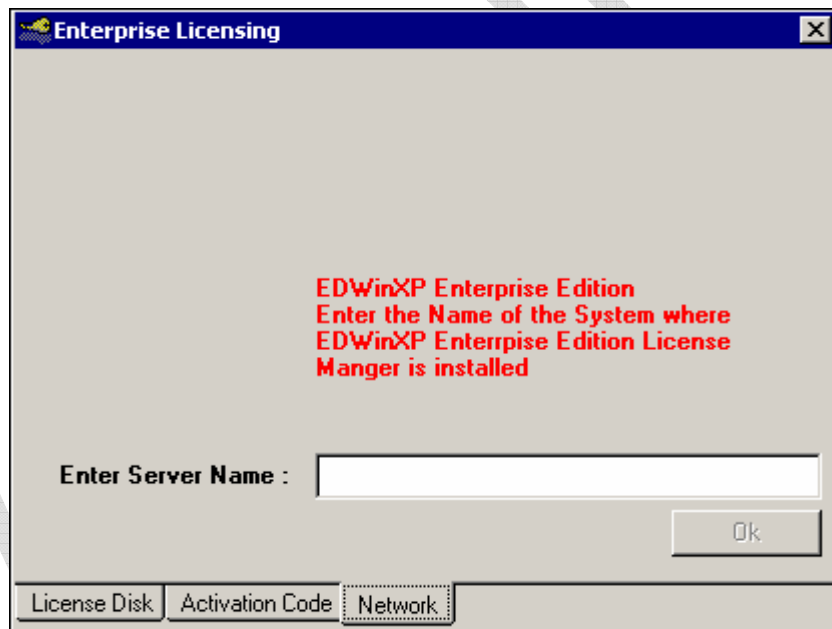
3. If activating through Licence Disk, provide the **path** of Licence diskette and click **OK** button.
4. If activating through activation code, send the **Product ID** to your distributor to obtain a valid Activation Code .You can also activate it online by using the activate online button. Enter this code in the space provided and click **OK** button.
5. To **extend** the **evaluation period**, follow step 4.

---

## Enterprise Licensing

Enterprise Licensing keeps a check on the number of licensed users of EDWinXP in a network. The machine on which Enterprise License Manager is installed acts as the server. The client machines (i.e machines having EDWinXP installed) should connect to this server and depending on the license available will be granted permission to use EDWinXP. For e.g.: if 5 licenses have been purchased and there are already 5 users of EDWinXP in the network, the sixth user will not be allowed to use until one person logs out.

1. Click on the menu item Help / Activate EDWinXP present in EDWinXP Project Explorer.
2. Click on [Network](#) tab.



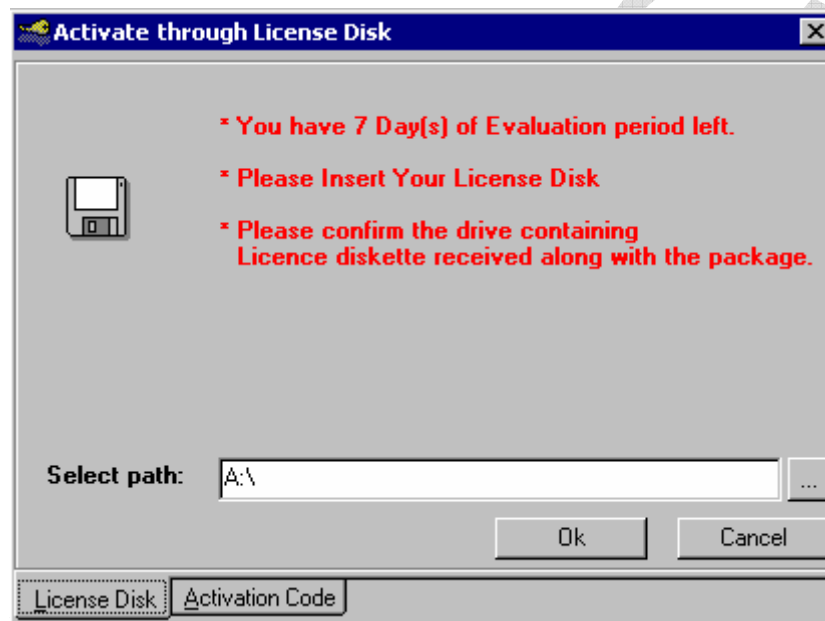
3. Enter the name of the system where EDWinXP Enterprise License manager is installed and click OK.

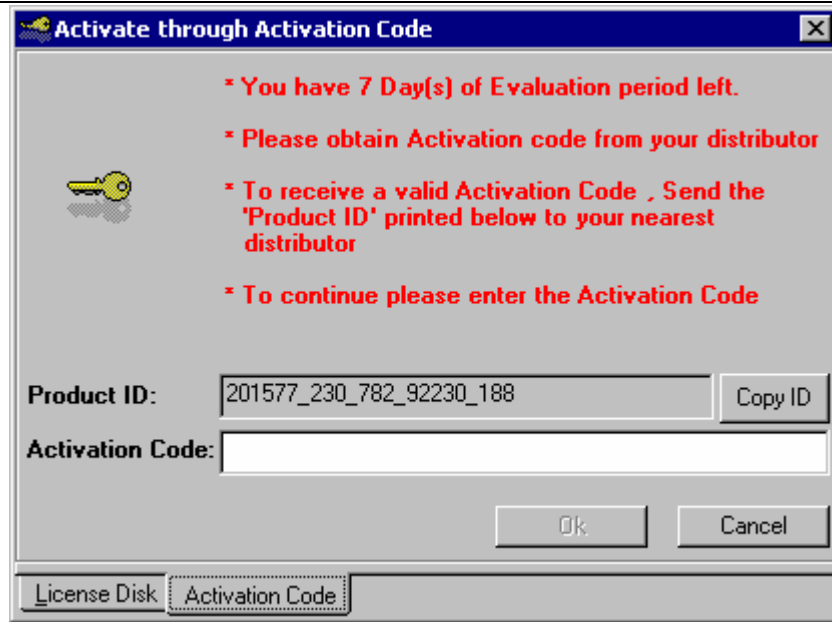
## Plug-in Installation

Plugins can be installed **only after** the product is **activated**. The evaluation version does not include plugins.

For Plug-in Installation, proceed as follows:

1. Click on the menu item Help / PlugIn Licences present in EDWinXP Project Explorer.
2. Plugins may be installed either using **Licence Disk** or **Activation Code**.






3. If installing through Licence Disk, provide the **path** of Licence diskette and click **OK** button.
4. If installing through Activation Code, send the **Product ID** to your distributor to obtain a valid Activation Code. Enter this code in the space provided and click **OK** button.

## Uninstall EDWinXP

This option will uninstall EDWinXP program leaving behind user created directories and files.

To uninstall, you can proceed in the following way:

Select  **EDWinXP – Uninstaller** from the program group (created while installing EDWinXP). This action deletes all directories and files leaving behind custom library files/ database files (other than those supplied with EDWinXP).

**Note:** If EDWinXP has been activated through Activation Code, the customer will not have a Licence Disk. While uninstalling when the program asks for Licence Disk, insert a new formatted floppy and continue.

VISIONICS