

© Norlinvest Ltd, BVI. Visionics is a trade name of Norlinvest Ltd. All Rights Reserved.

No part of the Product ID Generation document can be reproduced in any form or by any means without the prior written permission of Visionics. Product ID Generation document is subjected to change without notice. Visionics will make changes in a manner that will not affect dependent systems.

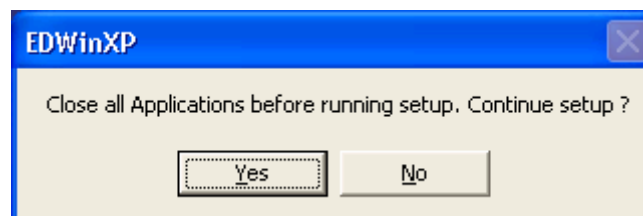
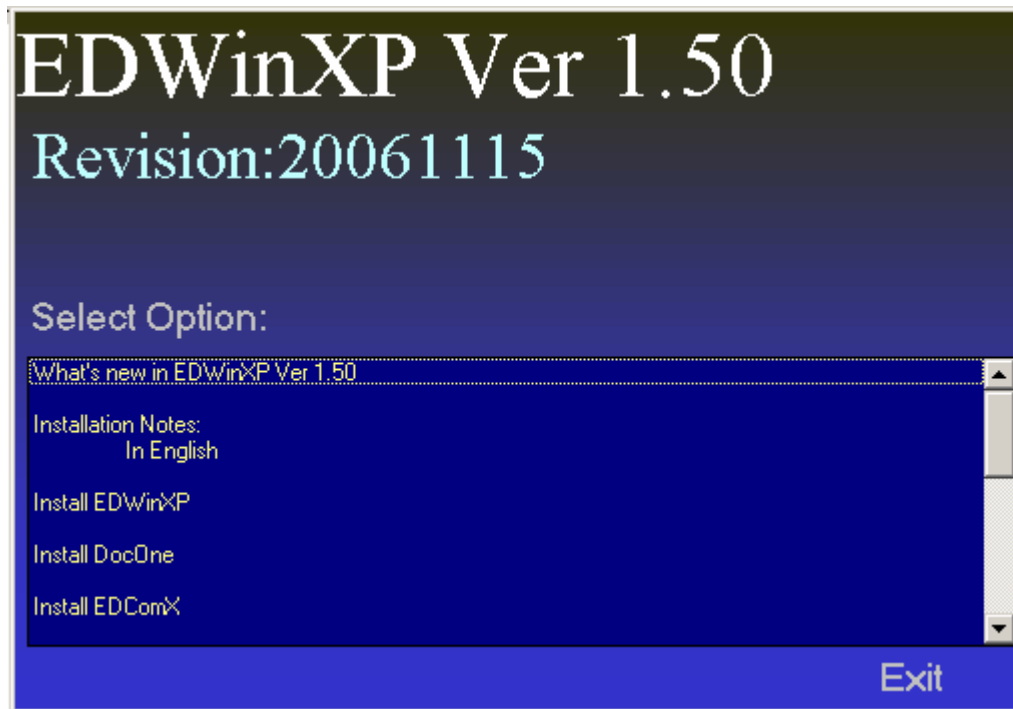
Unauthorized duplication, in whole or part, of this document by any means, mechanical or electronic, including translation into another language, except for brief excerpts in published reviews, is prohibited without the express written permission of Visionics.

Visionics, EDWinXP, Docone, EDCoMx, SimWinXP and Mixed Mode Simulator and their respective logos are trademarks or registered trademarks of Visionics. Unauthorized duplication of this work may also be prohibited by local statute.

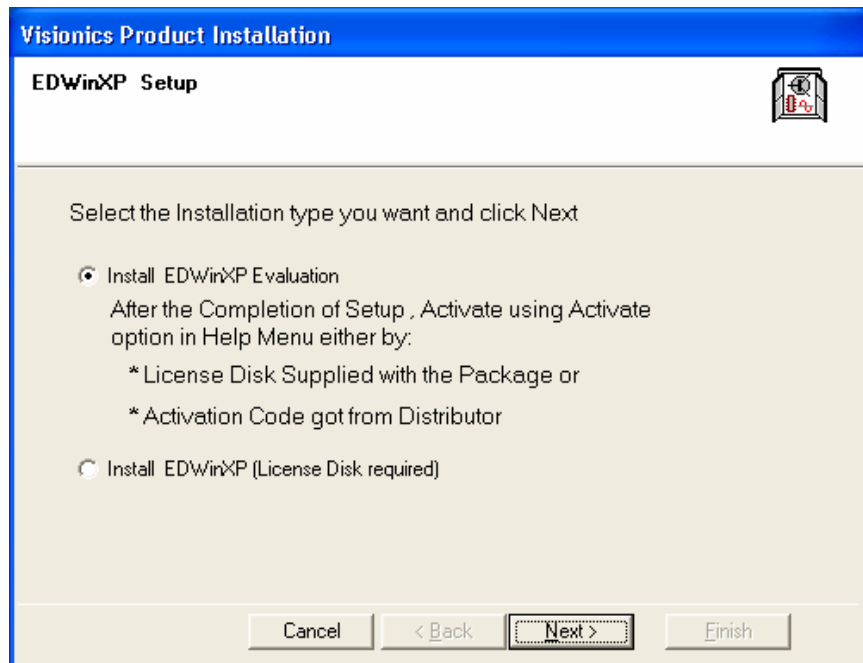
Disclaimer: Information in this publication is subject to change without notice and does not represent a commitment on the part of Visionics. The information contained herein is the proprietary and confidential information of Visionics or its licensors, and is supplied subject to, and may be used only by Visionics's customer in accordance with, a written agreement between Visionics and its customer. Except as may be explicitly set forth in such agreement, Visionics does not make, and expressly disclaims, any representations or warranties as to the completeness, accuracy or usefulness of the information contained in this document. Visionics does not warrant that use of such information will not infringe any third party rights, nor does Visionics assume any liability for damages or costs of any kind that may result from use of such information.

Product ID Creation

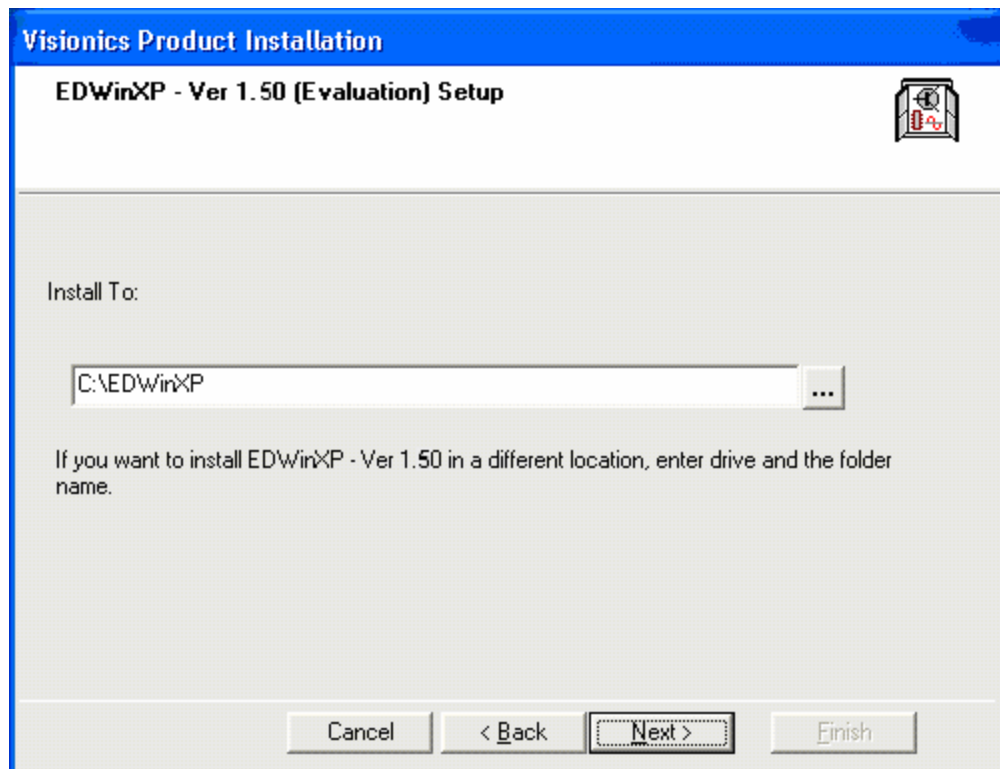
1. Insert EDWinXP CD. A window will pop up.
2. Click on **Install EDWinXP**.



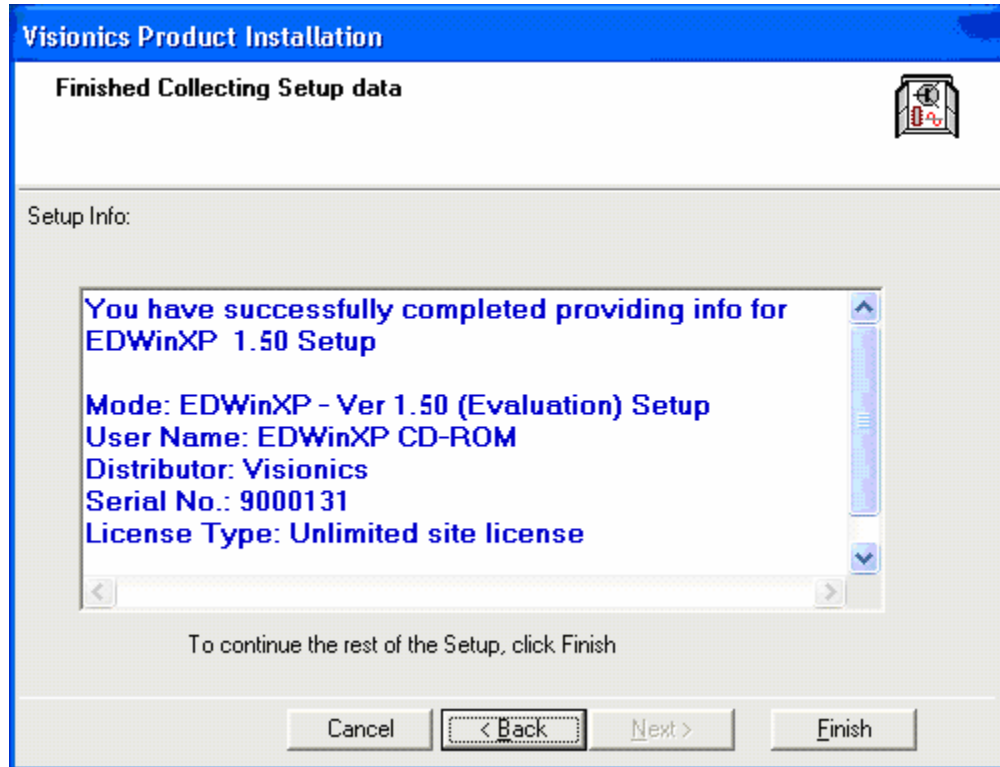
3. Click **Yes**



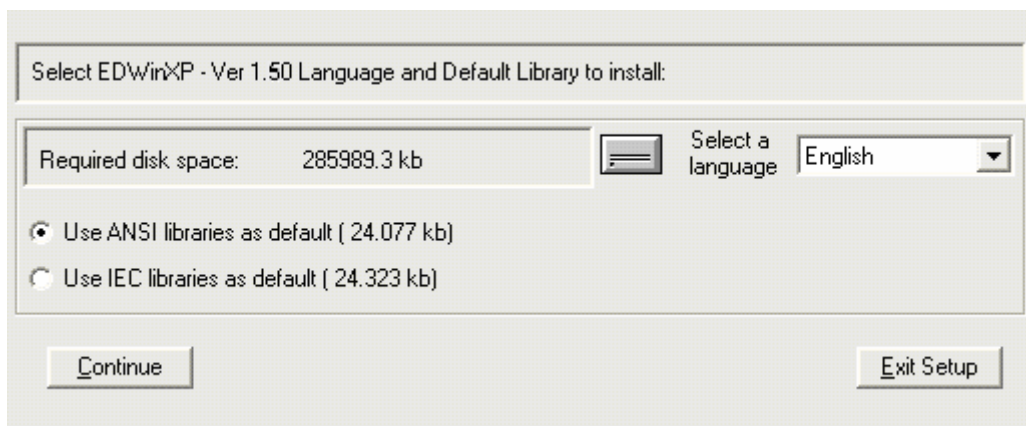
4. Click **Next**



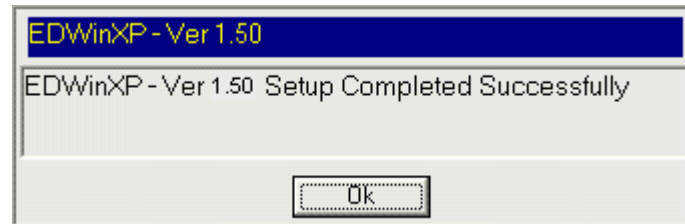
4. Select the drive where you want to install EDWinXP. By default it will install on C: Drive.
5. Click **N**ext.



6. Click **F**inish.
7. In the new window, Use ANSI libraries as default.
8. Click **C**ontinue.

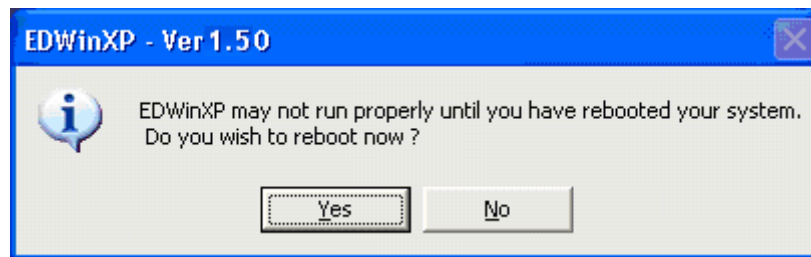


After successful installation a window will pop up.



9. Click **Ok**.

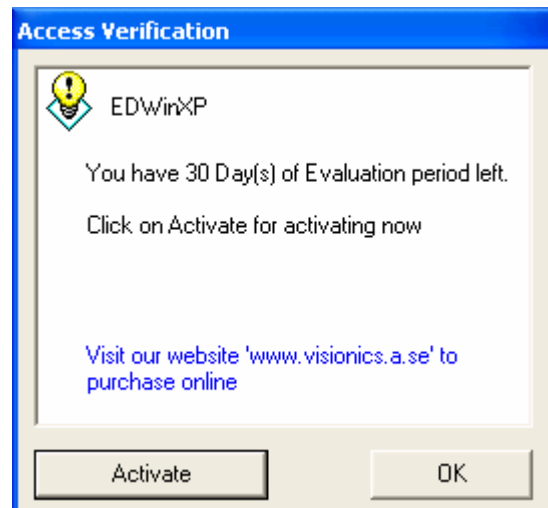
10. For proper working reboot the system after installation.



11. Click **Yes**.

12. Open EDWinXP-Ver 1.50 from **Start** → **Programs** → **EDWinXP- Main**

In the Access Verification window,



13. Click **Activate**.

The **Product ID** will generate in the field.

